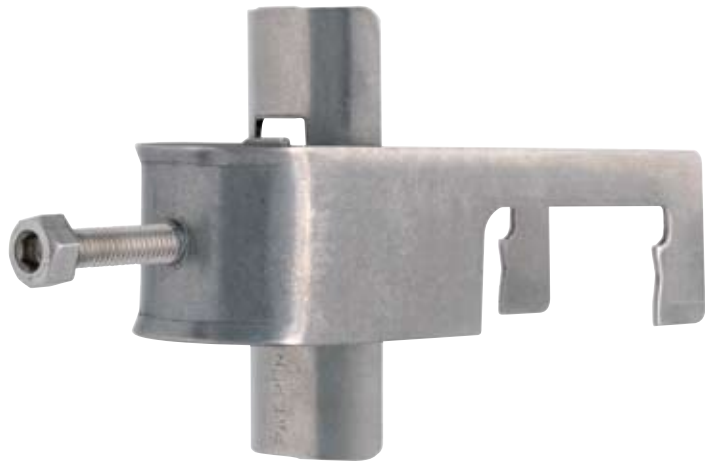


# Cable Clamps



for Flat (1.5 - 23 mm) and  
Round (8 - 23 mm) Tower Members



## PRODUCT FEATURES

- Minimises utilised space on towers, reducing wind load
- Made of stainless steel
- Fast and easy assembly
- No need for adapters or drilling holes
- Secured with wrench or hex key
- Protective interlayers safeguard against cable deformation
- Spring washer assures correct and constant pressure on cable and prevents over-tightening
- Supports up to 5 cable runs
- For use with 1.5 - 23 mm (0.06 - 0.9 in) flat and 8.0 - 23 mm (0.3 - 0.9 in) round members
- 10-year comprehensive warranty

1/2" CABLE		
ARTICLE	CABLE	NO. OF CABLES
CL23-1C012-A0	1/2"	1
CL23-2C012-A0	1/2"	2
CL23-3C012-A0	1/2"	3
CL23-4C012-A0	1/2"	4
CL23-5C012-A0	1/2"	5

7/8" CABLE		
ARTICLE	CABLE	NO. OF CABLES
CL23-1C078-A0	7/8"	1
CL23-2C078-A0	7/8"	2
CL23-3C078-A0	7/8"	3
CL23-4C078-A0	7/8"	4
CL23-5C078-A0	7/8"	5

1 1/4" CABLE		
ARTICLE	CABLE	NO. OF CABLES
CL23-1C114-A0	1 1/4"	1
CL23-2C114-A0	1 1/4"	2
CL23-3C114-A0	1 1/4"	3

1 5/8" CABLE		
ARTICLE	CABLE	NO. OF CABLES
CL23-1C158-A0	1 5/8"	1
CL23-2C158-A0	1 5/8"	2
CL23-3C158-A0	1 5/8"	3