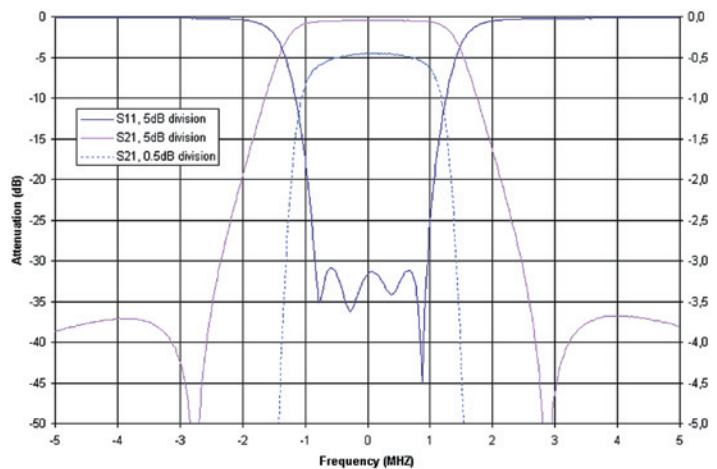
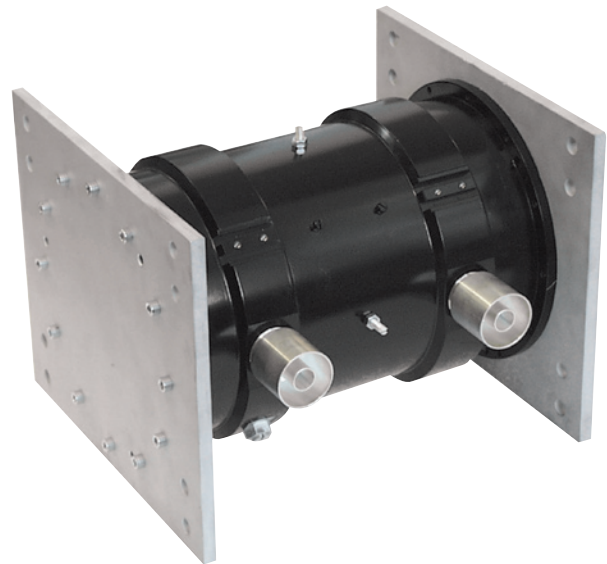


DAB Band L Bandpass filter

1 kW rms, 2 Cavities

BAND L

10 year GUARANTEE



PRODUCT FEATURES

- With Cross-coupling
- Compact design
- Dual-mode
- Very stable
- Retunable
- 10-year comprehensive warranty

PRODUCT PROFILE

The L Band DAB filter uses dual-mode waveguide features to provide a low-loss, high-rejection filter for either the critical or non-critical Eureka 147 mask specifications. Built with a stackable frame design and containing only silver-plated components, this temperature compensated unit is available both as a separate output filter and as part of our DAB channel combiners for up to 2 kW of power.

ARTICLE	BPFL-2D18-AA00
FREQUENCY	1452 - 1492 MHz
MAXIMUM INPUT POWER	1 kW rms
IMPEDANCE	50 Ohm
VSWR	<1.1 (>26dB)
INSERTION LOSS	
Centre frequency	0.7 dB
±0.77 MHz	0.95 dB
ATTENUATION	
±1.8 MHz	30 dB
STANDARD CONNECTION	1 5/8"
OPTIONAL CONNECTIONS	DIN 7/16 or 7/8"
DIMENSIONS	
L x W x H	240 x 290 x 340mm (9.4 x 11.4 x 13.4 in)
WEIGHT	24 kg (52.9 lb)