

# Directional Couplers

for Monitoring Various Power Levels



## PRODUCT FEATURES

- Forward and reverse couplers
- Adjustable coupling
- Low VSWR
- Low cost

## PRODUCT PROFILE

Directional couplers consist of a short loop inserted in the rigid line. Each end of the loop is then connected to a suitable contact, i.e. an  $\Pi$ -type contact. Between the inner conductor and the loop there are two types of coupling - inductive and capacitive. The inductive coupling resembles a short coil with the voltage at each end 180 degrees apart. The capacitive coupling generates a phase voltage at both ends.

All our directional couplers deliver excellent directivity, stable performance and low VSWR.

Other combinations than those shown below are available on request

SINGLE DIRECTIONAL COUPLERS INCLUDING MOUNTING KIT				
ARTICLE	DIRC-078R-AA00	DIRC-R158-A0	DIRC-R318-A0	DIRC-RL98-A0
<b>DIRECTIVITY</b>	40 dB	40 dB	40 dB	40 dB
<b>COUPLING RANGE</b>	Customer specified	Customer specified	Customer specified	Customer specified
<b>OUTPUT JACK</b>	Type N female	Type N female	Type N female	Type N female
<b>OUTPUT SOURCE</b>				
<b>IMPEDANCE</b>	50 Ohm	50 Ohm	50 Ohm	50 Ohm
<b>MOUNTING</b>	7/8"	EIA 1 5/8	EIA 3 1/8	RL 98

ARTICLE	DIRC-R120-A0	DIRC-R618-A0	DIRC-R230-A0
<b>DIRECTIVITY</b>	40 dB	40 dB	40 dB
<b>COUPLING RANGE</b>	Customer specified	Customer specified	Customer specified
<b>OUTPUT JACK</b>	Type N female	Type N female	Type N female
<b>OUTPUT SOURCE</b>			
<b>IMPEDANCE</b>	50 Ohm	50 Ohm	50 Ohm
<b>MOUNTING</b>	NAX 120	EIA 6 1/8	RL 230

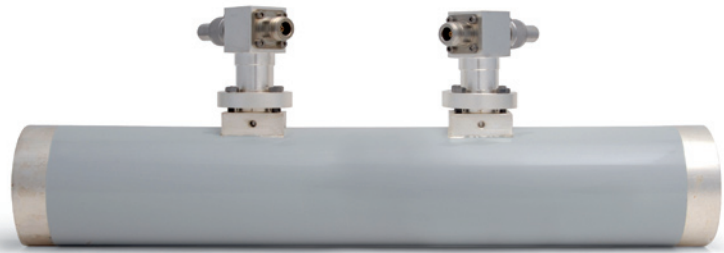
# Directional Couplers

for Monitoring Various Power Levels



Other combinations than those shown below are available on request

1 DIRECTIONAL COUPLER MOUNTED ON A PIECE OF RIGID LINE					
ARTICLE	MDIR-7160-A0	MDIR-R158-A0	MDIR-R318-A0	MDIR-RL98-A0	MDIR-R120-A0
<b>DIRECTIVITY</b>	40 dB	40 dB	40 dB	40 dB	40 dB
<b>COUPLING RANGE</b>	Customer specified	Customer specified	Customer specified	Customer specified	Customer specified
<b>OUTPUT JACK</b>	Type N female	Type N female	Type N female	Type N female	Type N female
<b>OUTPUT SOURCE</b>					
<b>IMPEDANCE</b>	50 Ohm	50 Ohm	50 Ohm	50 Ohm	50 Ohm
<b>MOUNTING</b>	DIN 7/16	EIA 1 5/8	EIA 3 1/8	RL 98	NAX 120



Other combinations than those shown below are available on request

2 DIRECTIONAL COUPLERS MOUNTED ON A PIECE OF RIGID LINE					
ARTICLE	MDR2-412R-AA00	MDIR-2158-A0	MDIR-2158F-A0	MDIR-2318-A0	MDIR-2RL98-A0
<b>DIRECTIVITY</b>	40 dB	40 dB	40 dB	40 dB	40 dB
<b>COUPLING RANGE</b>	Customer specified	Customer specified	Customer specified	Customer specified	Customer specified
<b>OUTPUT JACK</b>	Type N female	Type N female	Type N female	Type N female	Type N female
<b>OUTPUT SOURCE</b>					
<b>IMPEDANCE</b>	50 Ohm	50 Ohm	50 Ohm	50 Ohm	50 Ohm
<b>MOUNTING</b>	EIA 4 1/2	EIA 1 5/8	EIA 1 5/8 flanged	EIA 3 1/8	RL 98



Other combinations than those shown below are available on request

3 DIRECTIONAL COUPLERS MOUNTED ON A PIECE OF RIGID LINE				
ARTICLE	MDIR-3158-A0	MDIR-3158F-A0	MDIR-3318-A0	MDIR-3RL98-A0
<b>DIRECTIVITY</b>	40 dB	40 dB	40 dB	40 dB
<b>COUPLING RANGE</b>	Customer specified	Customer specified	Customer specified	Customer specified
<b>OUTPUT JACK</b>	Type N female	Type N female	Type N female	Type N female
<b>OUTPUT SOURCE</b>				
<b>IMPEDANCE</b>	50 Ohm	50 Ohm	50 Ohm	50 Ohm
<b>MOUNTING</b>	EIA 1 5/8	EIA 1 5/8 flanged	EIA 3 1/8	RL 98