

Elbows



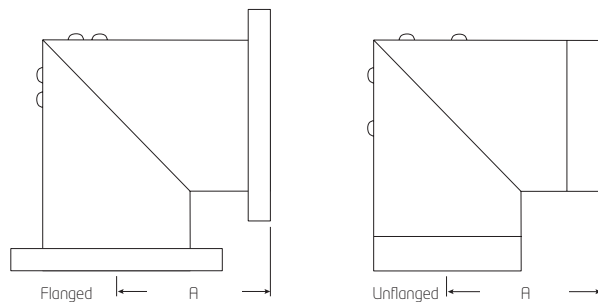
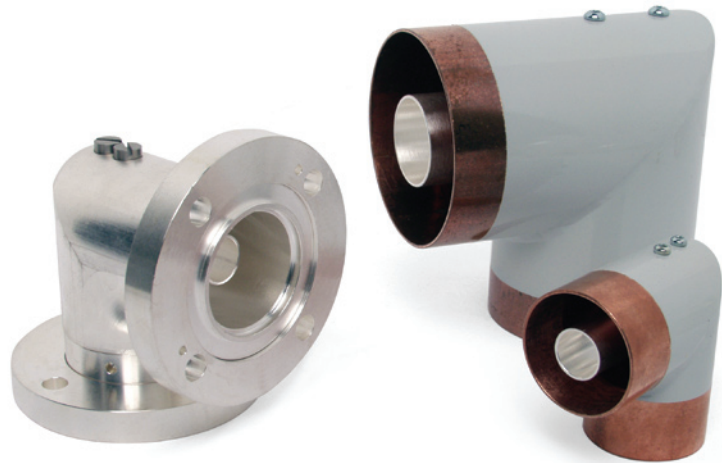
PRODUCT FEATURES

- High quality copper
- Easy assembly
- Customising possibilities

PRODUCT PROFILE

Exir Broadcasting manufactures elbows for all our rigid lines, both for outdoor and indoor use. The outdoor models are equipped with fixed or swivel flanges. O-rings of high quality EPDM are used for gas tight flanged connections.

All the support insulators for the inner conductor are made of high quality teflon (PTFE) that has been controlled and adjusted before manufacturing.



LINE TYPE	ARTICLE	Dim. A	MATERIAL OUTER CONDUCTOR
EIA 7/8" unflanged	R078-ELBO-A0	42.5 mm (1.67 in)	Copper
EIA 7/8" flanged	078F-ELBO-AA00	30° (male - male)	Silver-plated brass
EIA 1 5/8" unflanged	R158-ELBO-A0	42.1 mm (1.77 in)	Copper
EIA 1 5/8" flanged	158F-ELBO-A0	59.0 mm (2.32 in)	Silver-plated brass
EIA 3 1/8" unflanged	R318-ELBO-A0	80.0 mm (3.15 in)	Copper
EIA 3 1/8" flanged	318F-ELBO-A0	102.2 mm (4.02 in)	Silver-plated brass
RL98 unflanged	RL98-ELBO-A0	85.0 mm (3.35 in)	Copper
EIA 4 1/2" unflanged	R412-ELBO-A0	87.8 mm (3.46 in)	Copper
EIA 4 1/2" flanged	412F-ELBO-AC00	100.0 mm (3.94 in)	
Nax 120 unflanged	R120-ELBO-A0	97.5 mm (3.84 in)	Aluminum
EIA 6 1/8" unflanged	R618-ELBO-A0	117.8 mm (4.46 in)	Copper
EIA 6 1/8" flanged	618F-ELBO-A0	148.8 mm (5.86 in)	Copper
RL230 unflanged	R230-ELBO-A0	157.5 mm (6.20 in)	Aluminum
RL230 flanged	230F-ELBO-A0	231.5 mm (9.11 in)	Aluminum