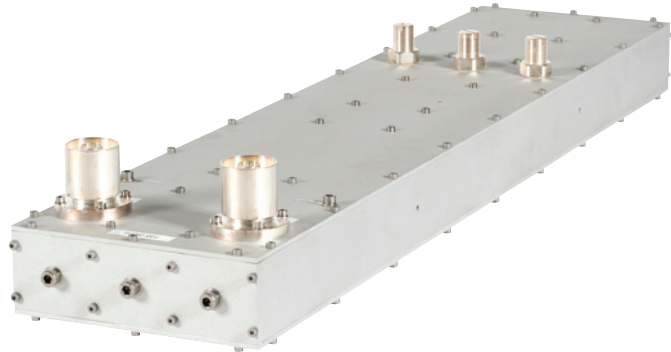


# FM Bandpass filter

## 500 W, 3 Cavities

BAND II

10  
year  
GUARANTEE

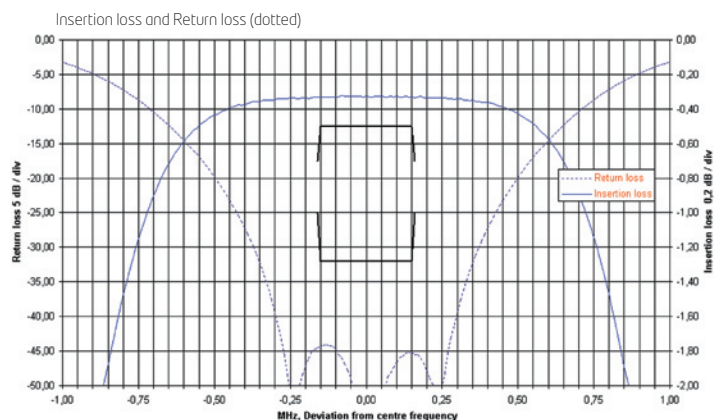


### PRODUCT FEATURES

- Flexible and compact
- Retunable
- 10-year comprehensive warranty

### PRODUCT PROFILE

Part of a family of filters in 3 cavity combination and ranging in power from 500 W to 10 kW. Used singly as a reflective bandpass filter or as part of a channel combiner they provide channel isolation for channels as close as 1 MHz (closer channel spacing on request). FM band tunable and simple tuning along with a tuner design that does not use spring fingers ensures a solid reliable product for years of broadcast service.



ARTICLE	BPF2-3C06-A001
<b>FREQUENCY</b>	87 - 108 MHz
<b>MAX INPUT POWER</b>	500 W
<b>IMPEDANCE</b>	50 Ohm
<b>VSWR</b>	<1.05 (>32 dB)
<b>INSERTION LOSS</b>	
Centre frequency	<0.7 dB
<b>BANDWIDTH</b>	
±200 kHz	<0.8 dB
<b>STANDARD CONNECTIONS</b>	7/16 DIN
<b>OPTIONAL CONNECTIONS</b>	EIA 1 5/8" or 7/8"
<b>DIMENSIONS</b>	
L x W x H	887 x 204 x 68 mm (35 x 8 x 2.7 in)
<b>WEIGHT</b>	~20 kg (44 lb)