

Matching Sections

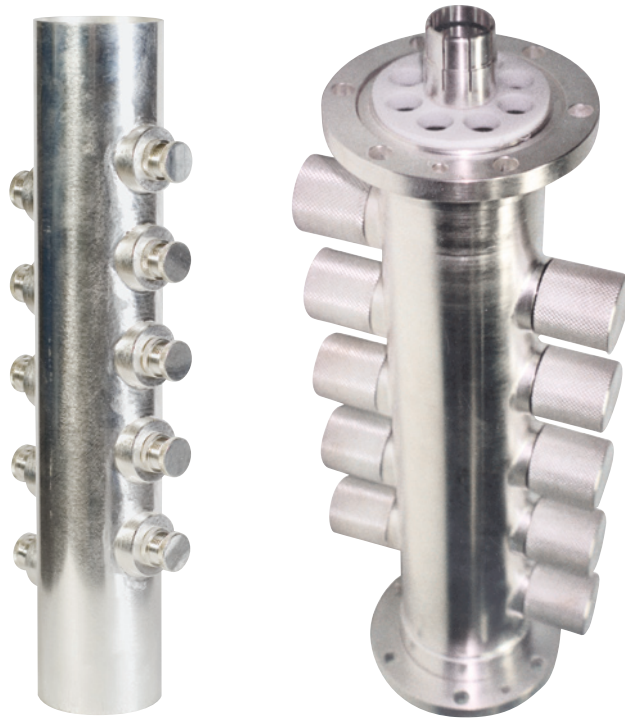


PRODUCT FEATURES

- Manufactured in silver-plated brass and copper
- All line sizes up to 6 1/8"
- Gas tight versions available
- Flanged and unflanged options
- FM, VHF and UHF versions available

PRODUCT PROFILE

These high-quality units are constructed from silver-plated brass and copper with a low-loss copper inner. Tuners can vary in number up to 10 depending on application and are available in both pressurised and non-pressurised versions. Available in all rigid line sizes up to 6 1/8" for VSUR matching in all radio and TV bands.



ARTICLE	MATC-7160-A0	MATC-R158-A0	MATC-158F-B0	MATC-2966-A0	MATC-R318-AA00	MATC-318F-A0
FREQUENCY	470 - 860 MHz	470 - 860 MHz	470 - 860 MHz	470 - 860 MHz	470 - 860 MHz	470 - 860 MHz
IMPEDANCE	50 Ohm	50 Ohm	50 Ohm	50 Ohm	50 Ohm	50 Ohm
MATCHING CAPABILITY AT OPERATING CHANNEL VSWR						
	1.05 to 6	1.05 to 6	1.05 to 6	1.05 to 6	1.05 to 6	1.05 to 6
CONNECTION	DIN 7/16	EIA 1 5/8" Unflanged	EIA 1 5/8" Flanged	DIN 29/66	EIA 3 1/8"	EIA 3 1/8" Flanged
TYPE	Outdoor	Indoor	Outdoor	Outdoor	Indoor	Outdoor
DIMENSIONS	Diam 20 mm (0.78 in) Length 310 mm (12.2 in)	Diam 52 mm (2.0 in) Length 436 mm (17.16 in)	Diam 89 mm (3.5 in) Length 370 mm (14.58 in)	Diam 96 mm (3.78 in) Length 450 mm (17.73 in)	Diam 77 mm (3.03 in) Length 370 mm (14.58 in)	Diam 77 mm (3.03 in) Length 370 mm (14.58 in)
WEIGHT	~3 kg (6.6 lb)	11 kg (24 lb)	12 kg (26.46 lb)	16 kg (35.28 lb)	~13 kg (35.28 lb)	16 kg (35.28 lb)

ARTICLE	MATC-4398-A0	MATC-RL98-AA00	MATC-R412-AA00	MAT4-618F-AA00	MATC-R618-A0
FREQUENCY	470 - 860 MHz	470 - 860 MHz	470 - 860 MHz	470 - 860 MHz	470 - 860 MHz
IMPEDANCE	50 Ohm	50 Ohm	50 Ohm	50 Ohm	50 Ohm
MATCHING CAPABILITY AT OPERATING CHANNEL VSWR					
	1.05 to 6	1.05 to 6	1.05 to 6	1.05 to 6	1.05 to 6
CONNECTION	DIN 43/98	RL98	EIA 4 1/2" Unflanged	EIA 6 1/8" Flanged	EIA 6 1/8" Unflanged
TYPE	Outdoor	Indoor	Indoor	Outdoor	Indoor
DIMENSIONS	Diam 120 mm (4.7 in) Length 436 mm (17.65 in)	Diam 100 mm (3.94 in) Length 423 mm (16.66 in)	Diam 106 mm (4.17 in) Length 423 mm (16.65 in)	Diam 164 mm (6.46 in) Length 501 mm (19.72 in)	Diam 164 mm (6.46 in) Length 422 mm (16.62 in)
WEIGHT	~18 kg (40 lb)	~14 kg (22.05 lb)	~14 kg (22.05 lb)	~18 kg (40 lb)	~11 kg (24 lb)