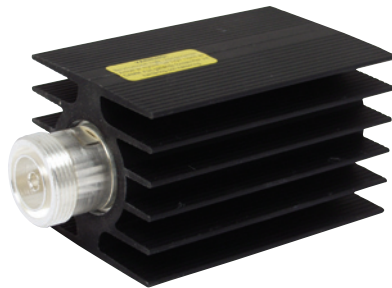


# Power Load

## 5, 25 and 100 W Dry



100 W



25 W



5 W

### PRODUCT PROFILE

These loads are well proven convection cooled loads that are used in all are combiners and systems and also as a stand alone component. The compact design and high-quality production is matter of course for many years in trouble free service.

ARTICLE	LDB0-0005-A0	LDB0-0005-B0
<b>FREQUENCY RANGE</b>	0-1 GHz	0-1 GHz
<b>MAX INPUT POWER (at 25° C)</b>	5 W	5 W
<b>IMPEDANCE</b>	50 Ohm	50 Ohm
<b>RETURN LOSS (0-1 GHz)</b>	>35 dB	>35 dB
<b>AMBIENT TEMPERATURE</b>	-55° C to +80° C	-55° C to +80° C
<b>CONNECTOR</b>	DIN 7/16 female	DIN 7/16 male
<b>DIMENSIONS</b>	Lenght 73 mm (2.88 in) Diam. 73 mm (2.88 in)	Lenght 73 mm (2.88 in) Diam. 73 mm (2.88 in)
<b>WEIGHT</b>	400 g (0.87 lb)	400 g (0.87 lb)

ARTICLE	LDB0-0025-AE00 DIN 7/16 female	LDB0-0025-AG00 N female
	LDB0-0025-AF00 DIN 7/16 male	LDB0-0025-AH00 N male
<b>FREQUENCY RANGE</b>	0-1 GHz	0-1 GHz
<b>MAX INPUT POWER (at 25° C)</b>	25 W	25 W
<b>IMPEDANCE</b>	50 Ohm	50 Ohm
<b>RETURN LOSS (0-1 GHz)</b>	>35 dB	>35 dB
<b>AMBIENT TEMPERATURE</b>	-55° C to +80° C	-55° C to +80° C
<b>CONNECTOR</b>	DIN 7/16 female/male	N female/male
<b>DIMENSIONS~</b>	122 x 58 x 65 mm L x W x H (4.80 x 2.28 x 2.56 in)	133 x 58 x 65 mm (5.24 x 2.28 x 2.56 in)
<b>WEIGHT~</b>	820 g (1.8 lb)	820 g (1.8 lb)

ARTICLE	LDB0-0100-A0	LDB0-0100-B0
<b>FREQUENCY RANGE</b>	0-1 GHz	0-1 GHz
<b>MAX INPUT POWER (at 25° C)</b>	100 W	100 W
<b>IMPEDANCE</b>	50 Ohm	50 Ohm
<b>RETURN LOSS (0-1 GHz)</b>	>35 dB	>35 dB
<b>AMBIENT TEMPERATURE</b>	-55° C to +80° C	-55° C to +80° C
<b>CONNECTOR</b>	DIN 7/16 female	DIN 7/16 male
<b>DIMENSIONS</b>	125 x 135 x 125 mm L x W x H (4.92 x 5.32 x 4.92 in)	125 x 135 x 125 mm (4.92 x 5.32 x 4.92 in)
<b>WEIGHT</b>	2.4 kg (5.29 lb)	2.4 kg (5.29 lb)