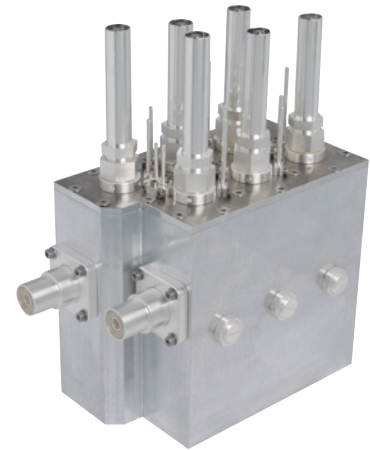


UHF Bandpass filter

200 and 250 W rms, 6 Cavities

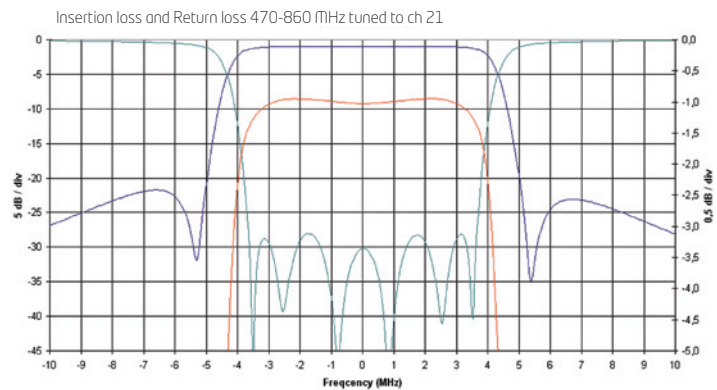


PRODUCT FEATURES

- Available with cross-coupling
- Small size
- Compact design
- Low insertion loss
- Available with temperature compensation
- Retunable
- 10-year comprehensive warranty

PRODUCT PROFILE

This low-power filter provides exceptional performance and system flexibility. It is tunable over the UHF band with 6, 7 and 8 MHz bandwidth without requiring any replacement of parts. The filter ensures excellent results in bandpass and channel combining applications. Temperature compensation is optional for achieving even greater filter stabilisation and reliability. Also available with black finish for handling up to 250 W of input power.



ARTICLE	BPF4-6C05-AB00 / BPF4-6C05-AC00	BPF4-6C05-AB01 / BPF4-6C05-AC01
FREQUENCY	470 - 860 MHz	470 - 860 MHz
MAXIMUM INPUT POWER	200 / 250 W rms	200 / 250 W rms
IMPEDANCE	50 Ohm	50 Ohm
VSWR	<1.1 (>26 dB)	<1.15 (>23 dB)
INSERTION LOSS, NARROWBAND	No Cross-coupling	Cross-coupling
Centre frequency	<1.0 dB	<1.2 dB
±3.8 MHz	<1.5 dB	<1.6 dB
±4.2 MHz	>2.0 dB	>3.0 dB
±6.0 MHz	>20 dB	>22 dB
±12.0 MHz	>60 dB	>28 dB
STANDARD CONNECTION	7/8" RL unflanged	7/8" RL unflanged
OPTIONAL CONNECTIONS	DIN 7/16 m/f or N m/f	DIN 7/16 m/f or N m/f
DIMENSIONS	200 x 120 x 210-300 mm (7.9 x 4.7 x 8.3-11.8 in)	200 x 120 x 210-300 mm (7.9 x 4.7 x 8.3-11.8 in)
WEIGHT	4.6 kg (10.1 lb)	4.6 kg (10.1 lb)