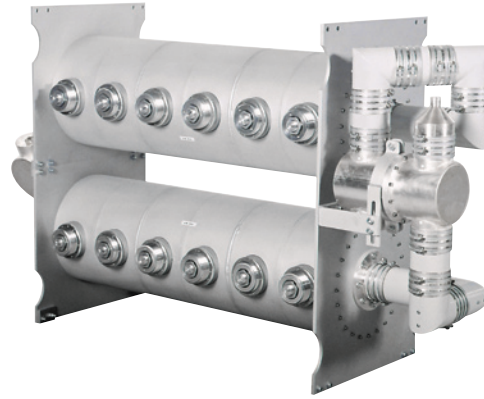


UHF Constant Impedance Combiner

24 - 30 kW rms, 6 Cavities

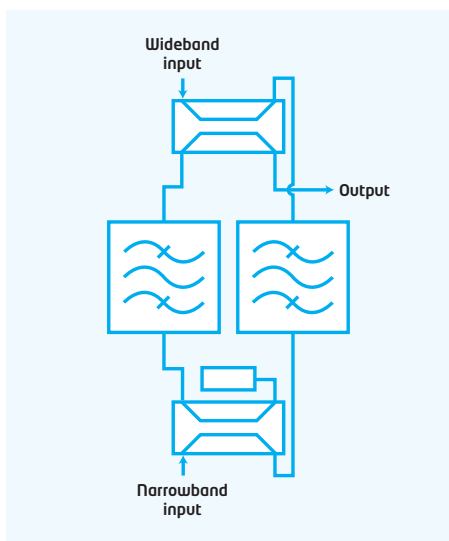


PRODUCT FEATURES

- Flexible modular design
- High isolation
- Low insertion loss
- Dry loads
- Convection cooled
- Available with temperature compensation
- 10-year comprehensive warranty

PRODUCT PROFILE

Waveguide single mode filters employ all the advantages of low losses and high rejection characteristics to provide adjacent channel combining and mask filtering in the same assembly. Suitable for input digital powers up to 30 kW and Peak Sync analogue powers up to 40 kW these versatile units have become the one of our most popular filter/combiner combinations.



ARTICLE STANDARD	COM4-6CWG-A001
WITH TEMPERATURE COMPENSATION	COM4-6WGF-AI00 / COM4-6WGF-AJ00
FREQUENCY	470 - 860 MHz
IMPEDANCE	50 Ohm

NARROWBAND INPUT	
MAX INPUT POWER	24 kW rms / 30 kW rms
INPUT VSWR	<1.1 (>26 dB)
INPUT CONNECTOR	RL 98 unflanged
INSERTION LOSS	
Centre frequency	<0.2 dB
±3.8 MHz	<0.4 dB
±4.2 MHz	>1.8 dB
±6.0 MHz	>24 dB
±12.0 MHz	>64 dB

WIDEBAND INPUT	
INPUT VSWR	<1.05 (>32 dB) 2 specified channels
INPUT CONNECTOR	RL 98 unflanged
INSERTION LOSS	
±24 MHz	0.05 dB
±16 MHz	0.05 dB
±8 MHz	0.1 dB

ISOLATION	
NARROWBAND - WIDEBAND	>36 dB
WIDEBAND - NARROWBAND	
±8 MHz from narrowband Cf	<60 dB
±24 MHz from narrowband Cf	<80 dB

MINIMUM CHANNEL SPACING	1 free channel
MAXIMUM OUTPUT POWER	36 kW rms
OUTPUT CONNECTOR	RL 98 (optional NAX 120)
DIMENSIONS	
L x W x H	1649 x 667 x 1000 mm (65 x 26.2 x 39.4 in) acc. to channel
WEIGHT	200±25 kg (440±55 lb)