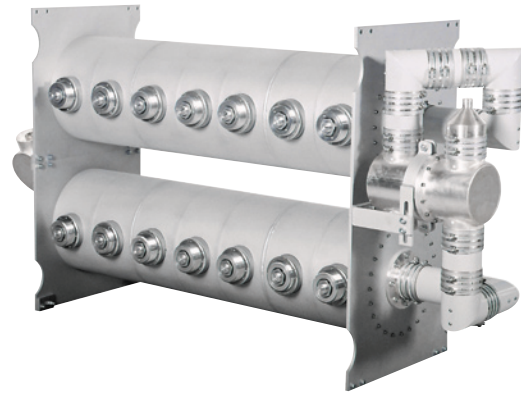


# UHF Constant Impedance Combiner

BAND IV-V

10 year GUARANTEE

## 24 - 30 kW rms, 7 Cavities

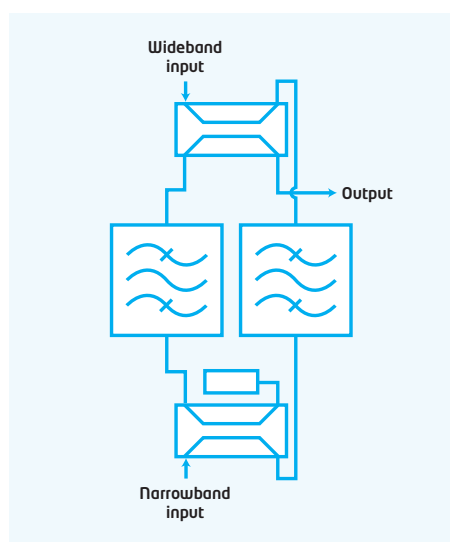


### PRODUCT FEATURES

- Flexible modular design
- 7 cavities for sharp filtering
- High isolation
- Low insertion loss
- Dry loads
- Convection cooled
- Temperature compensated
- 10-year comprehensive warranty

### PRODUCT PROFILE

These 7 cavity, single-mode, waveguide combiners employ the low-loss, high-power characteristics of waveguide technology with coaxial input and output. Ideal for analogue and digital transmitters, they provide high rejection and isolation in a sturdy, self-supporting, compact assembly. Available for 24 kW maximum input power as well as with black finish and cooling fins for handling up to 30 kW rms.



ARTICLE	COM4-7WGF-AA00 / COM4-7WGF-AB00
<b>FREQUENCY</b>	470 - 860 MHz
<b>IMPEDANCE</b>	50 Ohm
<b>NARROWBAND INPUT</b>	
<b>MAX INPUT POWER</b>	24 kW rms / 30 kW rms
<b>INPUT VSWR</b>	<1.1 (<26 dB)
<b>INPUT CONNECTOR</b>	RL 98 unflanged
<b>INSERTION LOSS</b>	
Centre frequency	<0.2 dB
±3.8 MHz	<0.6 dB
±4.2 MHz	>3.8 dB
±6.0 MHz	>33 dB
±12.0 MHz	>80 dB
<b>WIDEBAND INPUT</b>	
<b>INPUT VSWR</b>	<1.05 (<32 dB) 2 specified channels
<b>INPUT CONNECTOR</b>	RL 98 unflanged
<b>INSERTION LOSS</b>	
±24 MHz	0.05 dB
±16 MHz	0.05 dB
±8 MHz	0.1 dB
<b>ISOLATION</b>	
<b>NARROWBAND - WIDEBAND</b>	
>36 dB	
<b>WIDEBAND - NARROWBAND</b>	
±8 MHz from narrowband Cf	>60 dB
±24 MHz from narrowband Cf	>80 dB
<b>MINIMUM CHANNEL SPACING</b>	
Adjacent	
<b>MAXIMUM OUTPUT POWER</b>	
36 kW rms	
<b>OUTPUT CONNECTOR</b>	
RL 98 (optional NAX 120)	
<b>DIMENSIONS</b>	
1995 x 667 x 1000 mm	
(78.5 x 26.2 x 39.4 in) acc. to channel	
<b>WEIGHT</b>	
225±25 kg (496±55 lb)	